

RESERVED FOR USE BY THE REGISTRY OF DEEDS

Hampden County Registry of Deeds
 Rec'd 5-11-06 at 12:35 p.m.
 Recorded in Book of Plans 344 of 61
 Attest: *[Signature]*
 Registrar: *[Signature]*
 DATE: 3.7.06 P.L.S. #32659 REG. #

THE CERTIFICATIONS SHOWN HEREON ARE INTENDED TO MEET REGISTRY OF DEEDS REQUIREMENTS AND ARE NOT A CERTIFICATION TO TITLE OR OWNERSHIP OF THE PROPERTY SHOWN.

I HEREBY CERTIFY THAT THIS IS A TRUE PLAN BASED ON FIELD SURVEYS AND THE LATEST DEEDS AND PLANS OF RECORD AND THAT THIS PLAN CONFORMS TO THE RULES AND REGULATIONS OF THE REGISTRY OF DEEDS.

DAVID E. TEACHOUT
 P.L.S. #32659
 REG. #

DISTRICT DIMENSIONAL REGULATIONS	
District	AGRICULTURAL
Min. Lot Size	3 AC.
Min. Frontage	300'
Min. Front Yard Depth	40'
Min. Side Yard Depth	40'
Min. Rear Yard Depth	40'
Max. Height of Bldg.	35'
Max. Bldg. Lot Coverage	20%

PARCEL DESCRIPTIONS

Parcel name: LOT #20
 Line Course: N 33-06-43 W Length: 199.87
 Line Course: N 14-36-52 W Length: 193.13
 Line Course: N 14-36-52 W Length: 75.00
 Line Course: S 79-15-33 W Length: 156.67
 Line Course: S 64-19-48 W Length: 821.00
 Line Course: N 31-52-51 E Length: 295.02
 Line Course: N 13-52-51 E Length: 292.00
 Line Course: N 09-52-51 E Length: 167.32
 Line Course: N 80-03-56 E Length: 611.13
 Line Course: N 13-04-56 E Length: 59.55
 Line Course: S 77-04-04 E Length: 143.70
 Line Course: S 02-42-55 E Length: 746.90
 Line Course: S 04-47-50 E Length: 41.55
 Perimeter: 3714.83 Area: 450,259 sq. ft. 10.34 acres

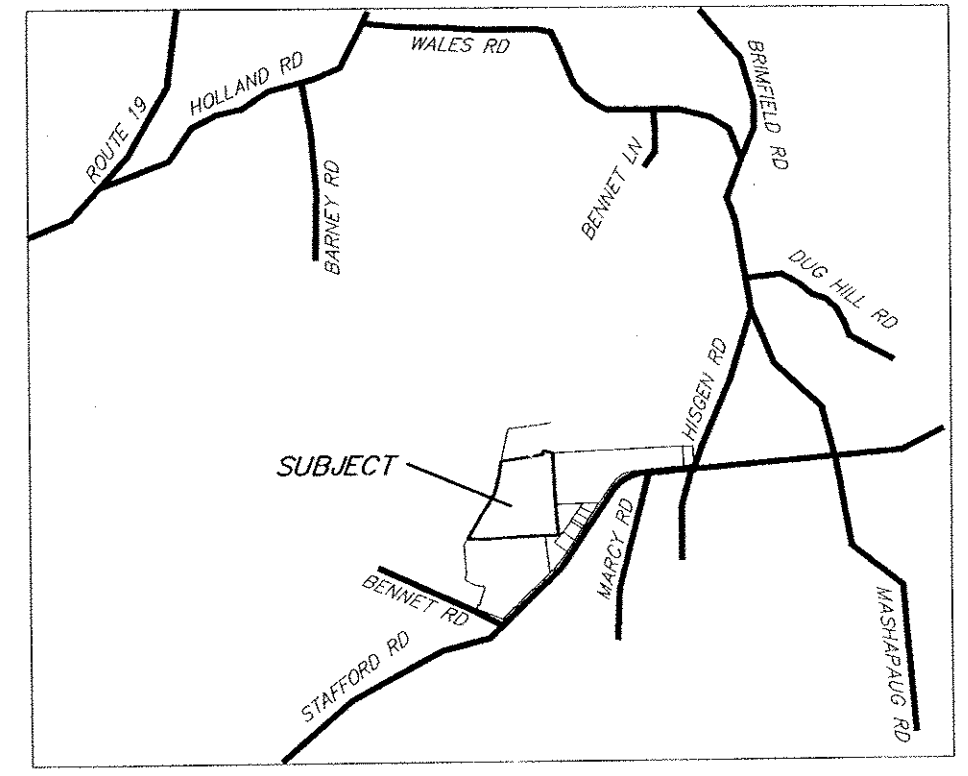
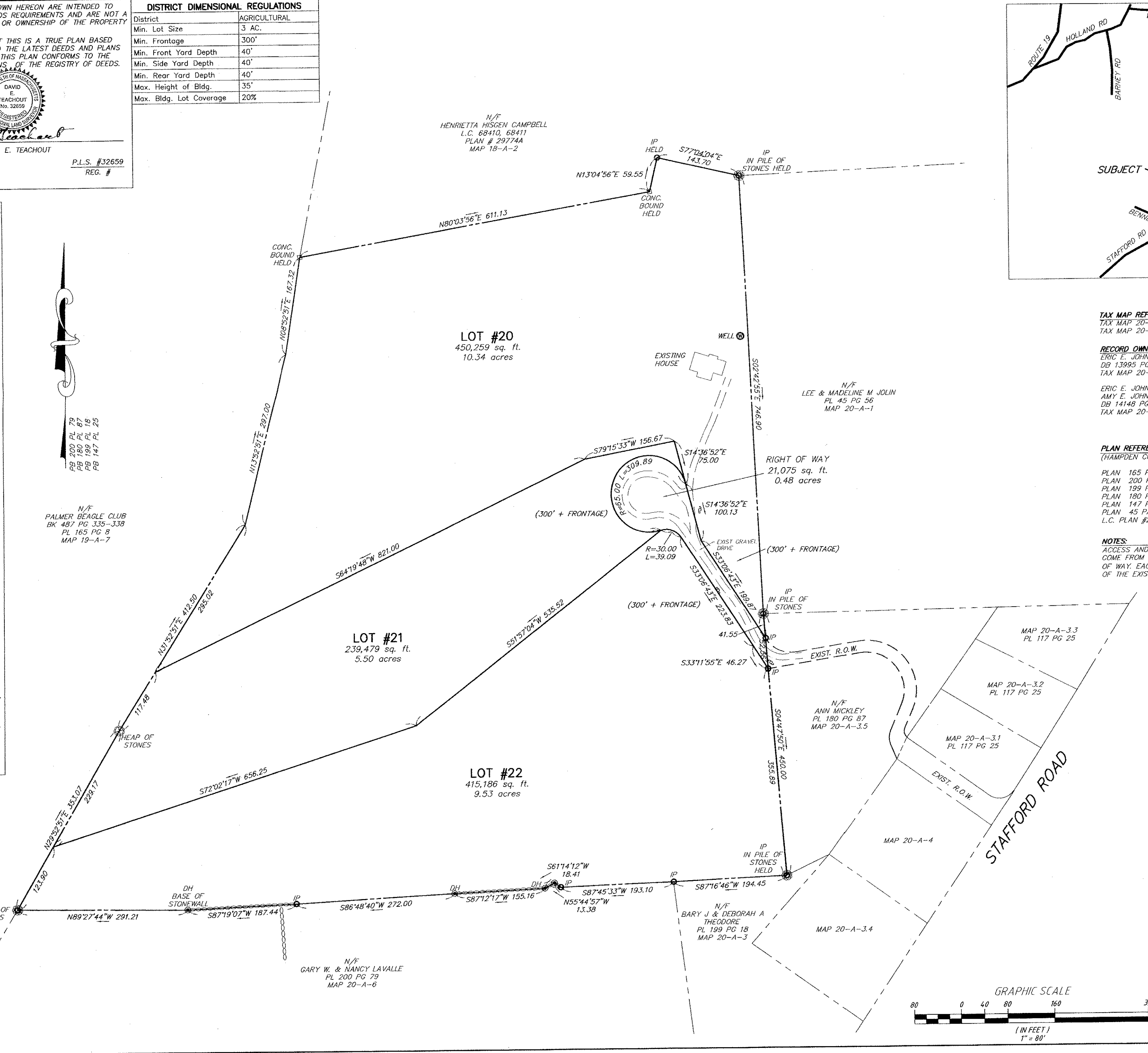
Parcel name: LOT #21
 Curve Length: 309.89 Radius: 65.00
 Delta: 273-09-40 Tangent: 61.51
 Chord: 89.35 Course: S 28-48-18 W
 Course In: S 75-23-08 W Course Out: S 17-46-32 E
 Line Course: S 51-57-04 W Length: 535.52
 Line Course: S 72-02-17 W Length: 656.25
 Line Course: N 29-52-51 E Length: 223.17
 Line Course: N 31-52-51 E Length: 117.48
 Line Course: N 64-19-48 E Length: 821.00
 Line Course: N 79-15-33 E Length: 156.67
 Line Course: S 14-36-52 E Length: 75.00
 Perimeter: 2900.98 Area: 239,479 sq. ft. 5.50 acres

Parcel name: LOT #22
 Curve Length: 39.09 Radius: 30.00
 Delta: 74-39-49 Tangent: 22.88
 Chord: 36.39 Course: S 70-26-38 E
 Course In: S 17-46-32 E Course Out: N 56-53-17 E
 Line Course: S 33-06-43 E Length: 223.83
 Line Course: S 33-11-55 E Length: 46.27
 Line Course: S 04-47-50 E Length: 355.89
 Line Course: S 87-16-46 W Length: 194.45
 Line Course: S 87-45-33 W Length: 193.10
 Line Course: N 55-44-57 W Length: 13.38
 Line Course: S 61-14-12 W Length: 18.41
 Line Course: S 87-12-17 W Length: 155.16
 Line Course: S 86-48-40 W Length: 272.00
 Line Course: S 87-19-07 W Length: 187.44
 Line Course: N 89-27-44 W Length: 291.21
 Line Course: N 29-52-51 E Length: 123.90
 Line Course: N 72-02-17 E Length: 656.25
 Line Course: N 51-57-04 E Length: 535.52
 Perimeter: 3305.91 Area: 415,186 sq. ft. 9.53 acres

Parcel name: RIGHT OF WAY
 Line Course: N 33-11-55 W Length: 46.27
 Line Course: N 33-06-43 W Length: 223.83
 Curve Length: 39.09 Radius: 30.00
 Delta: 74-39-49 Tangent: 22.88
 Chord: 36.39 Course: N 70-26-38 W
 Course In: S 56-53-17 W Course Out: N 17-46-32 W
 Curve Length: 309.89 Radius: 65.00
 Delta: 273-09-40 Tangent: 61.51
 Chord: 89.35 Course: N 28-48-18 E
 Course In: N 17-46-32 W Course Out: N 75-23-08 E
 Line Course: S 14-36-52 E Length: 100.13
 Line Course: S 33-06-43 E Length: 199.87
 Line Course: S 04-47-50 E Length: 52.56
 Perimeter: 971.65 Area: 21,075 sq. ft. 0.48 acres

- LEGEND**
- UTILITY POLE
 - STONE WALL
 - IP IRON PIPE
 - FND FOUND
 - WCH WORCESTER COUNTY HIGHWAY
 - BND BOUND
 - EXISTING CONTOUR
 - BOUND SYMBOL
 - TREE LINE
 - DI DROP INLET
 - CB CATCH BASIN
 - UP UTILITY POLE

STA 152+40.27 HIGHWAY LAYOUT STATION



TAX MAP REFERENCES:
 TAX MAP 20-A-2
 TAX MAP 20-A-5

RECORD OWNERS:
 ERIC E. JOHNSON
 DB 13995 PG 74
 TAX MAP 20-A-5
 ERIC E. JOHNSON
 AMY E. JOHNSON
 DB 14148 PG 405
 TAX MAP 20-A-2

PLAN REFERENCES:
 (HAMPDEN COUNTY REGISTRY OF DEEDS)
 PLAN 165 PAGE 8
 PLAN 200 PAGE 79
 PLAN 199 PAGE 18
 PLAN 180 PAGE 87
 PLAN 147 PAGE 25
 PLAN 45 PAGE 56
 L.C. PLAN #29774A

NOTES:
 ACCESS AND UTILITIES TO LOTS 20, 21, 22 IS TO COME FROM THE PROPOSED 11,214 SQ.FT. RIGHT OF WAY. EACH LOT HAS 300' OF FRONTAGE OFF OF THE EXISTING GRAVEL DRIVE.

PLANNING BOARD APPROVAL UNDER THE SUBDIVISION CONTROL LAW IS NOT REQUIRED.
 HOLLAND PLANNING BOARD

[Signatures]

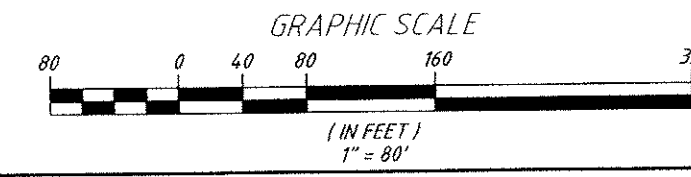
DATE: 3/7/06

ANR PLAN OF LAND

OWNED BY
ERIC E. JOHNSON

PREPARED FOR
**ERIC E. JOHNSON
 CARL JOHNSON**

LOCATED AT
 OFF STAFFORD ROAD
 HOLLAND, MA 01521
 HAMPDEN COUNTY
 SCALE 1"=80' MARCH 3, 2006
 PREPARED BY



Bertin Engineering Associates, Inc.
 39 Elm Street Southbridge, MA 01550
 (508) 765-0195 fax (508) 765-0193
 www.bertinengineering.com